

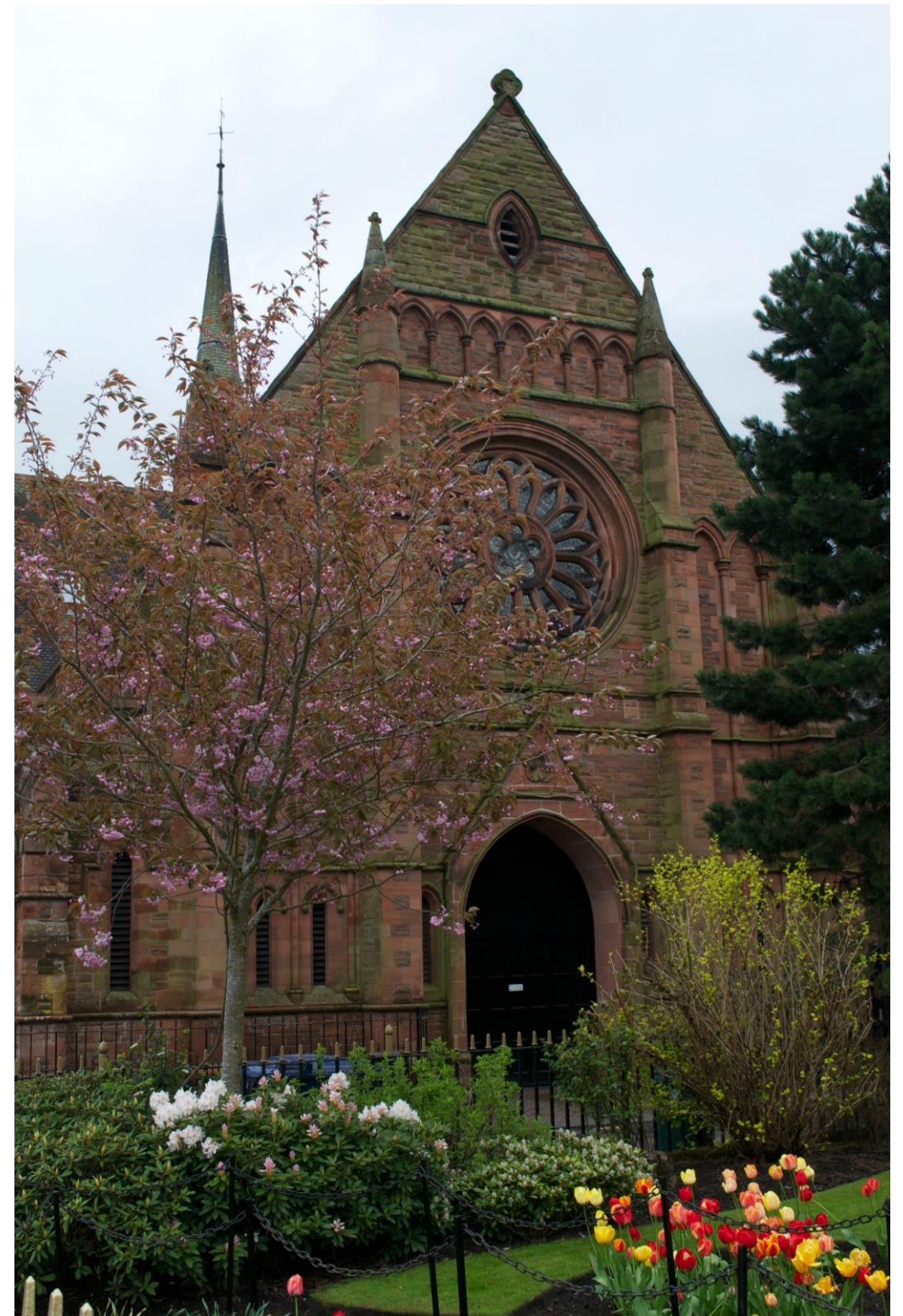
Dementia Friendly Churches: how churches can help create a dementia friendly community

Trevor Adams PhD

♥ **Dementia Friendly Church**
an initiative from **Passionate Dementia Care**

Dementia Friendly Churches

- welcome, include and are assessable to people with dementia and their carers

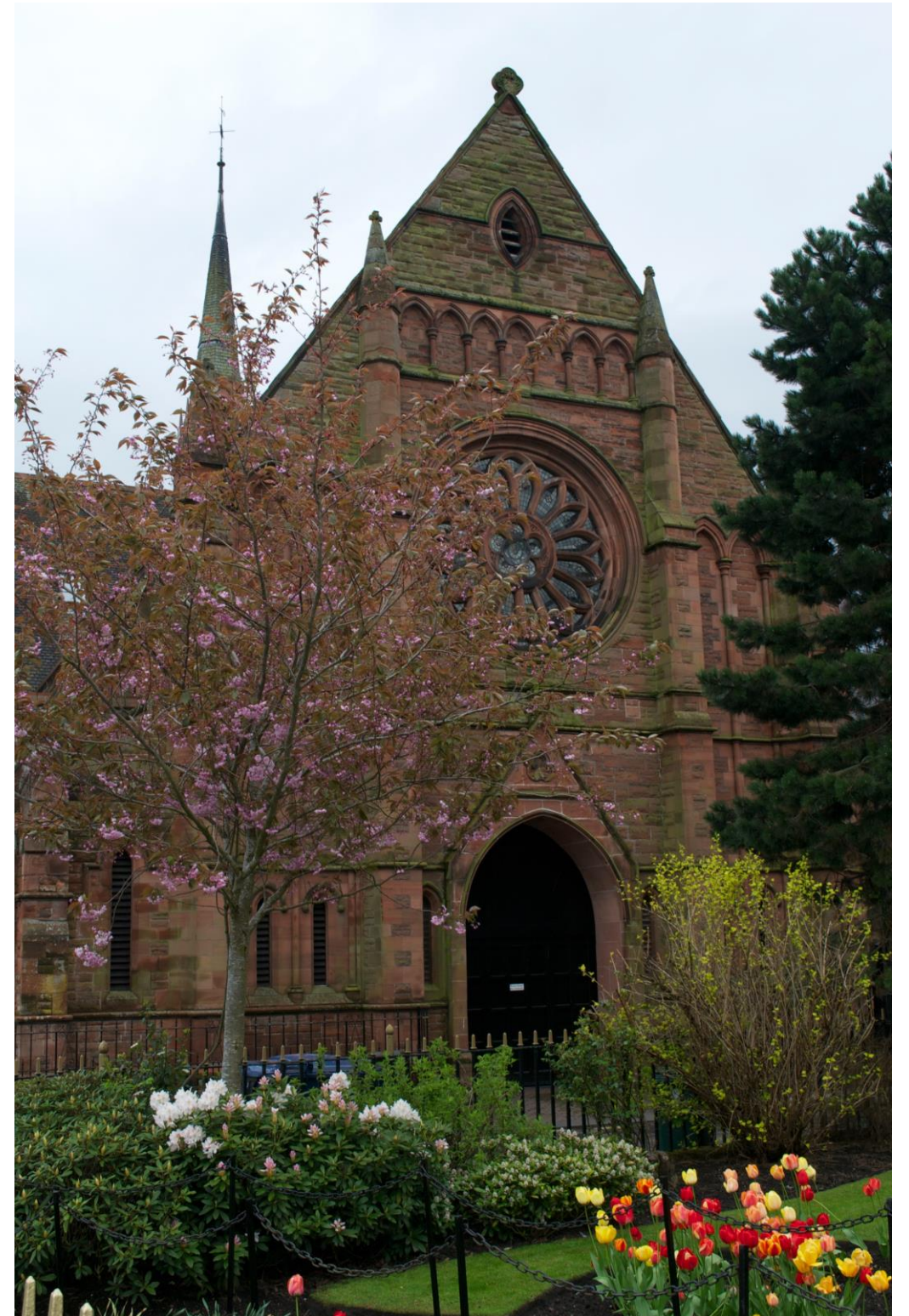


♥ **Dementia Friendly Church**

an initiative from **Passionate Dementia Care**

Dementia Friendly Churches

- welcome, include and are assessable to people with dementia and their carers
- work with other local organisations that are seeking to make their community dementia friendly



♥ **Dementia Friendly Church**

an initiative from **Passionate Dementia Care**

Dementia Friendly Churches

Developed in the last four years by organisations such as:

- Livability/Passionate Dementia Care
- Faithworks Wessex
- Diocese of Lichfield - Church of England
- Telos Training
- Faith in Older People

♥ **Dementia Friendly Church**

an initiative from **Passionate Dementia Care**

Dementia Friendly Churches

Mobilising churches through

- information sharing
- networking
- sharing stories
- action planning

♥ **Dementia Friendly Church**

an initiative from **Passionate Dementia Care**

Dementia Friendly Churches

- person centred approaches
- social policy
- theology of dementia

♥ **Dementia Friendly Church**

an initiative from **Passionate Dementia Care**

person centred approaches

People with dementia

- have essential value - Kitwood
- have a sense of self that arises out of past events and how people talk and act towards them - Kitwood
- have views and attributes that should be shared - Goldsmith
- are participants in the local community - Bartlett & O'Connor

♥ **Dementia Friendly Church**

an initiative from **Passionate Dementia Care**

person centred approaches

Builds on Kitwood's work by highlighting:

- personal agency
- community

'Broadening the Debate' - Bartlett and O'Connor

♥ **Dementia Friendly Church**

an initiative from **Passionate Dementia Care**

Three theological ideas that promote inclusion

- People reflect the divine image and are equally valuable, *including people with dementia*
- Jesus calls us to love people that society overlooks, *including people with dementia*
- Without people with dementia, the church is incomplete

♥ **Dementia Friendly Church**

an initiative from **Passionate Dementia Care**

social policy

- Prime Minister's Dementia Challenge 2012 and 2020
- Proposal for Scotland's National Dementia Strategy 2016-19: March 2016

♥ **Dementia Friendly Church**

an initiative from **Passionate Dementia Care**

social policy

big society

- people taking an active role to promote their own wellbeing and that of others within their local community
- support through co-operatives, charities and social enterprises
- optimising social capital - asset based community development

♥ **Dementia Friendly Church**

an initiative from **Passionate Dementia Care**

social policy

A Priority Proposal

‘Supporting the development of and complementing bottom-up, community-led Dementia Friendly Community initiatives

Utilising these assets as part of service and support re-design, linking with initiatives and programmes such as The Life Changes Trust and Dementia Friends’

**Proposal for Scotland’s National Dementia Strategy
2016-19: March 2016**

♥ **Dementia Friendly Church**

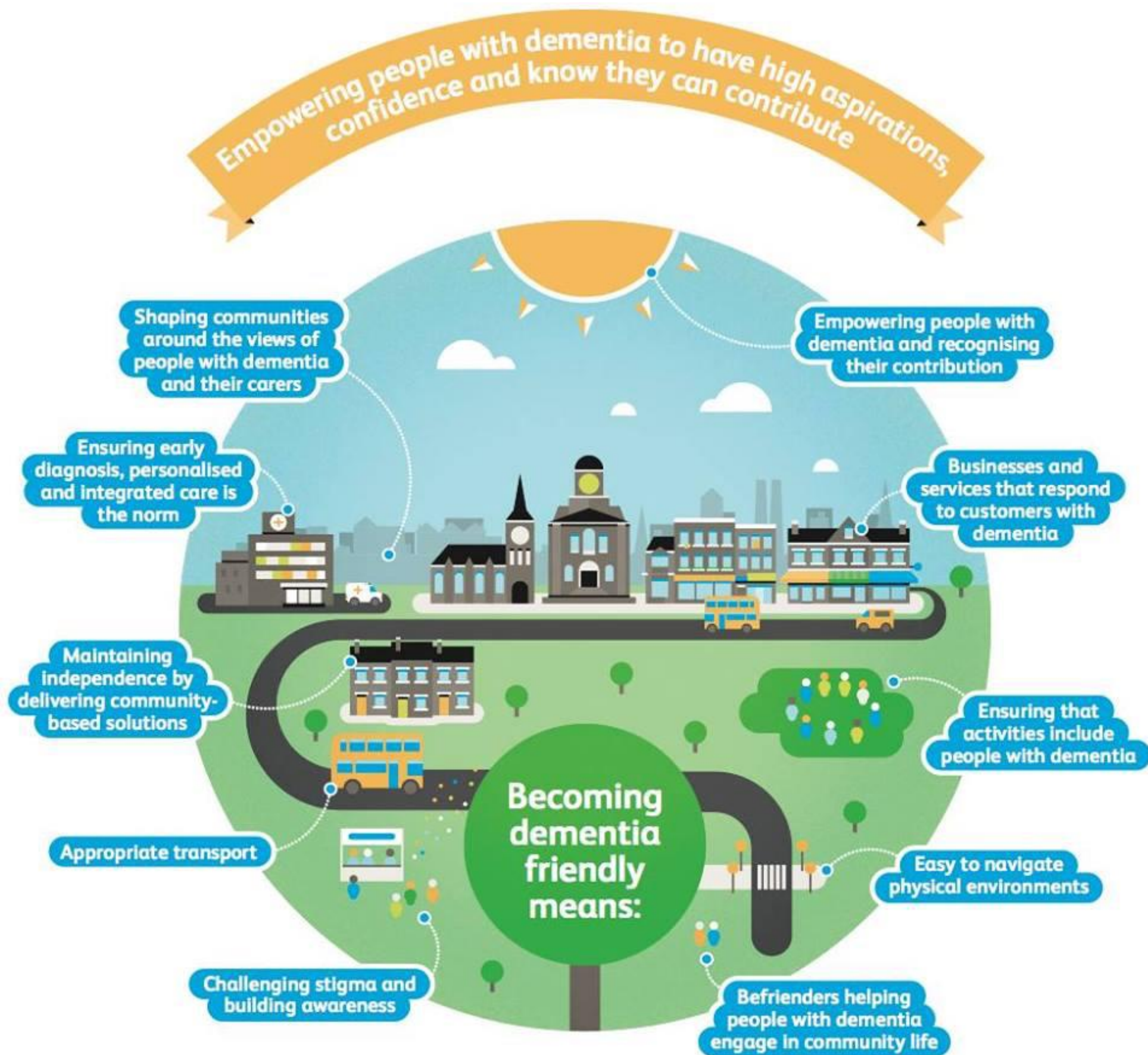
an initiative from **Passionate Dementia Care**

social policy

‘A dementia-friendly community is one in which people with dementia are empowered to have high aspirations and feel confident, knowing they can contribute and participate in activities that are meaningful to them.’

♥ **Dementia Friendly Church**

an initiative from **Passionate Dementia Care**



♥ **Dementia Friendly Church**

an initiative from **Passionate Dementia Care**

theology

Dementia friendly churches draw on various theological approaches

- disability theology
- inclusive theology

♥ **Dementia Friendly Church**

an initiative from **Passionate Dementia Care**

theology

‘My wife was a regular attendee at church; she played the organ for many years. Now she doesn’t go because she is humiliated that she can’t remember when to stand up or sit down’

‘Dementia Without Walls’ (p. 39).

♥ **Dementia Friendly Church**

an initiative from **Passionate Dementia Care**

Six Step Dementia Friendly Church Development Plan

from Passionate Dementia Care

♥ Dementia Friendly Church

an initiative from **Passionate Dementia Care**

Step 1

Listen

Listen to key stakeholders:

Listen to the local community

Listen to God

♥ **Dementia Friendly Church**

an initiative from **Passionate Dementia Care**

Step 2

Assess

Livability produces a Dementia Friendly Church Health Check

♥ **Dementia Friendly Church**

an initiative from **Passionate Dementia Care**

Step 3

Plan

Write a brief and feasible action plan. Best done by a group of people. Ask opinions and gain support of church leaders. Identify people with a special interest and abilities who might take the action plan forward. Consider linking with other churches and involving locally based dementia care specialists.

♥ □ Dementia Friendly Church

an initiative from **Passionate Dementia Care**

Step 4

Train

Dementia Friends Training

and/or

Dementia Friendly Church Training - to help churches develop an action plan

Bespoke and participatory

May include

people's experience of having dementia

carer's experience

welcoming and communication skills

biblical insights

visiting speakers - to promote networking

♥ **Dementia Friendly Church**

an initiative from **Passionate Dementia Care**

Step 5

Do

Livability have developed a range of 'Ten Top Tips'

Dementia friendly buildings

Dementia friendly worship

Dementia friendly prayer

Dementia friendly communication

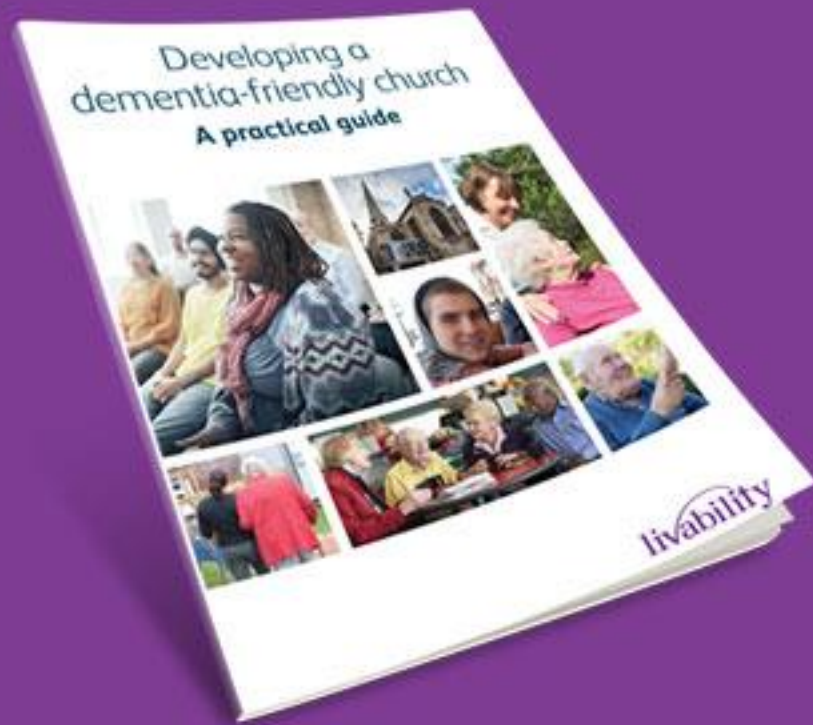
Dementia friendly networking

<http://www.livability.org.uk/wp-content/uploads/2016/01/Top-ten-tips-for-Dementia-Friendly-Communities.pdf>

♥ **Dementia Friendly Church**

an initiative from **Passionate Dementia Care**

Activities



Get a copy of this
guide today

www.livability.org.uk/livability-and-the-alzheimers-society-publish-new-guidelines/

♥ **Dementia Friendly Church**

an initiative from **Passionate Dementia Care**

Activities

Songs/Hymns for the Brain

St. Thomas', Lancaster have developed a group for people with dementia and their carers called Lyrics and Lunch.



♥ **Dementia Friendly Church**

an initiative from **Passionate Dementia Care**

5. Activities

Dementia Friendly Service



♥ **Dementia Friendly Church**

an initiative from **Passionate Dementia Care**

Activities

Memory Cafe/Support Group

Dementia Friendly Chorleywood
Memory Café




Working in partnership with Five Ways Friends, this friendly and welcoming club is for those living with, or caring for those with, dementia. Our memory café offers you a chance to join in with an exercise activity, meet new people and gain extra support as a carer.


**The First Monday of Every Month
10.30am - 12.30pm**

Christ Church, The Common, Rickmansworth Rd,
Chorleywood, Rickmansworth, Hertfordshire WD3 5SG

Phone **01923 216967**

 **Dementia Friends**
An Alzheimer's Society Initiative

 **Dementia Friendly Chorleywood**
www.dementiafriendlychorleywood.org.uk

 **Dementia Friendly Chorleywood**

♥ **Dementia Friendly Church**

an initiative from **Passionate Dementia Care**

Activities

Dementia Friendly Worship



♥ **Dementia Friendly Church**

an initiative from **Passionate Dementia Care**

Activities

Pastoral visiting



♥ **Dementia Friendly Church**

an initiative from **Passionate Dementia Care**

Activities

Increasing involvement of churches
with local dementia groups



♥ **Dementia Friendly Church**

an initiative from **Passionate Dementia Care**

Step 6

Evaluate

Ask key people, including people with dementia and their carers about what they thought about the activities - what worked, what did not work, what was missing - and make changes to your action plan for the next 6-12 months

♥ Dementia Friendly Church

an initiative from **Passionate Dementia Care**

Dementia friendly faiths

Sharing information that other faiths can use to develop their faith community as dementia friendly

♥ **Dementia Friendly Church**

an initiative from **Passionate Dementia Care**

Areas For Future Research

sharing what has worked well in different projects

positive effects of different dementia friendly churches

people's stories about how dementia friendly churches have helped and supported them

♥ Dementia Friendly Church

an initiative from **Passionate Dementia Care**



♥ **Dementia Friendly Church**

an initiative from **Passionate Dementia Care**